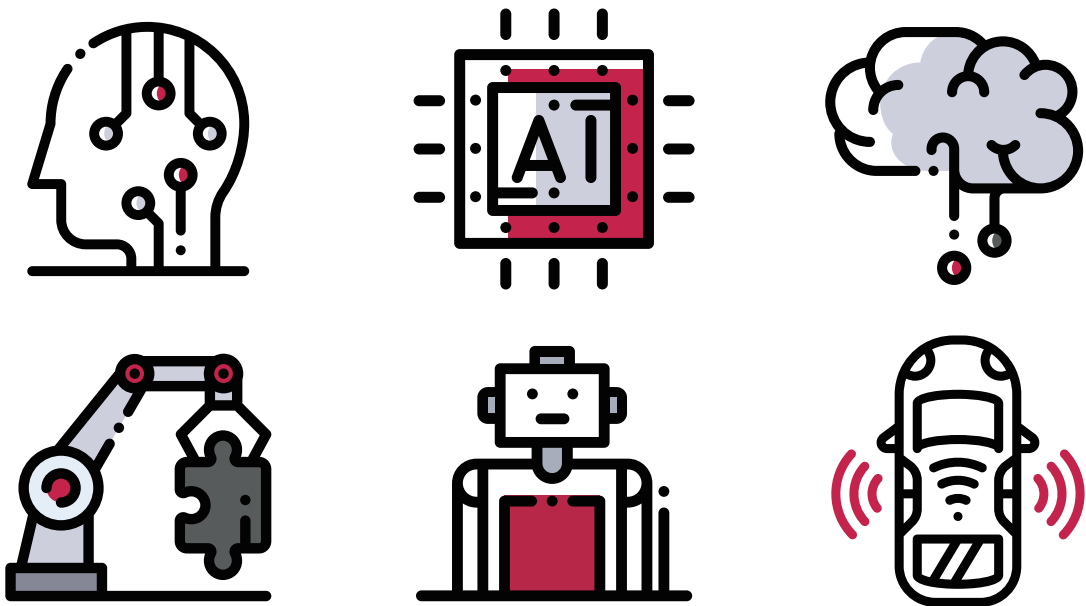


LG전자

해외 우수 R&D 인재 채용



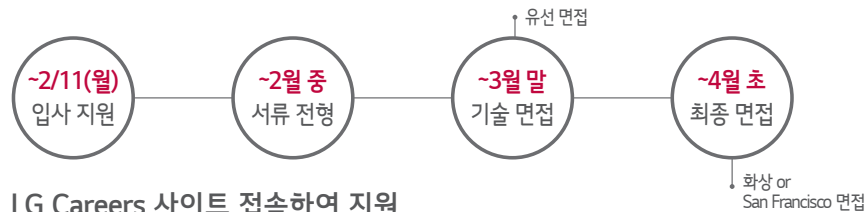
모집기간

2019년 1월 1일(화) ~ 2월 11일(월) 10시 (한국시간 기준)

모집대상

2020년 상반기 내 졸업예정자(석/박사) 또는 기졸업자

전형절차



지원방법

LG Careers 사이트 접속하여 지원

▶ 상세방법



▶ 추천ID/PW(대소문자, 공백 구분)

· ID : join2019us · PW : join2019us#

※ 학사의 경우 [LG전자] 2019 상반기 미국 우수 R&D 인재채용(학사) 공고에 지원 부탁드립니다.

· ID : join2019usb · PW : join2019usb#

인재등록

www.lgetalent.com · 인증코드 : 2019us



* 학교별 현장 상담시 필요한 모바일 인재카드 등록 절차입니다.

사전에 작성하실 경우 빠른 상담이 가능합니다.

상담에 참여하지 못하더라도 LG전자 인재 Pool로 등록하여 향후 모집 안내,

각종 행사 초대 등 다양한 활동을 통해 여러분들과 소통을 위한 자료로 쓰일 예정입니다.

Contact

careers.lg.com '1대1 문의하기'

LG Electronics Recruiting

모집 분야	세부 내용	사업본부/부문							
		H&A	HE	MC	VS	BS	CTO	로봇 사업 센터	소재/ 생산 기술원
AI (Artificial Intelligence)	○ Advanced Algorithm & Control Intelligence - Machine Learning, Deep Learning, Reinforcement Learning - R-CNN, LSTM/GLM, GAN, Auto ML, Meta-Learning, etc.	•	•	•	•	•	•	•	•
	○ Cognitive Vision Intelligence - Face Recognition, Vision Feature Extraction, Vision Data Augmentation, 3D Modeling - People tracking, Motion Predicton, Behavior Algorithm, Path Planning	•	•	•	•	•	•	•	•
	○ Voice Intelligence - Legacy and DNN-based Multi-Channel Speech Enhancement - Multi-modal based Speech Recognition, Speaker Recognition - Deep learning based Natural Language Understanding, Dialog Modeling, Trasnfer Learning(word semantics)	•	•	•	•	•	•	•	•
	○ Big Data - Data Mining & Predictive Analysis - Data collection / ETL / Dashboard / Design & Establishment of Data Service Platform - Cloud Server / Modeling / Web Programming	•	•			•	•	•	•
SW	○ OS/Kernel - OS : Android / webOS / Linux Kernel / Device Driver / BSP - OS Kernel / BSP (Memory Management / File System / Open Source Contribution) - Power Saving & Battery Management (Fast Charging)	•	•	•	•	•	•	•	
	○ SW Architecture & Application - SW Training / SW Infra / SW Architecture / SW Process & Tool / SW Test / SDET - SDK / Technical Evangelism / Mobile App	•	•		•	•	•	•	•
	○ Middleware - Web technology / Security / Media Streaming - Multimedia(Audio / Camera / Video) - Network & Communication Protocol / LTE-A / Radio / Bluetooth / WIFI / Service / CAN / BAP Protocol / Diagnostic				•	•	•	•	
Robot	○ Robotics - Pedestrian / Obstacle / People Recognition algorithm - RGB-D / Stereo Sensor & control - People tracking / Motion Predicton / Behavior Algorithm / Global & Local Path Planning - Interaction / Image Processing & Computer Vision / 3D Vision Reconstruction / Robotics - SLAM (Simultaneous Location And Mapping) / Global Mapping / Localization - Robot SW Platform Design / Embodiment / BSP Porting / Device Driver Design - Mechanism / Circuit / Control R&D / Robot Manipulation	•			•		•	•	
	○ Automation Robotics - Robot Automation / Transferring (Stocker / AGV / Conveyor) / Logistics Consulting and Engineering - Robot Motion (3D bin Picking, Flexible Material Handling, Cable locking, etc.) - Auto Teaching / Path-Planning Algorithm (OLP, MIMIC, etc.) - End-effector Design (Gripper, T/F Sensor) - Robot AGV Actuator (Motor / Driver / Encoder) - Robot Application Technology (Assembly, Gluing, Grinding / Polishing, Welding, etc.)							•	•
Vehicle Component	○ Autonomous Vehicle Driving - Mobile Robot or UGV (Unmanned Ground Vehicle) Research - SLAM Algorithm Development / Application - Optimized Path Planning / Tracking Algorithm Research - Proficient C / C++ / Matlab / LabView Programming - Embedded Systems Development				•		•		
	○ Autonomous Vehicle Radar / LiDAR Technology - Automotive Radar System Radar and Algorithm Development - Car Radar Antenna Design: Patch Antenna / Phase Array Antenna - Development Car Radar Embedded SW - Car LiDAR System and Algorithm Research				•		•		
	○ ADAS - Display Application Technology Research / Camera and Optical Design Technology / DSP / Micom Application Design / Wireless protocol / RF Design / Optimal Design - Embedded System Power Management - Machine Vision / Design of Recognition / AP Chip / Radio Tuning / HW Development - Web Platform / HTML5(Open Source Platform)				•		•		
	○ Development for Automobile Lamp - LED Head Lamp / Rear Light Distribution / Optical Design Technology - LDM / ADAS Intelligent Control HW Development / Control Algorithm				•		•		
Power Electronics	○ Appliance Control R&D - Power Electronics / Induction Heating / Wireless Power Transfer / Electronic Signal Transceivers(Smart) / Vision Sensor Application - Fan Design / Flow Path Design / Heat Exchanger Design / Radiation Design - Metal Material / Tribology / Electronic Material	•					•	•	
	○ Motor - Motor Design / Motor Cooling / Cooling Circuit Design / Permanent Magnetic AC / DC Motor Design&Development of mass production - Rotor Reliability Design / Vibration / Noise Reliability Design - B-ISG : Belt-Integrated Starter and Generator - System Reliability Test : Rotor Dynamic Reliability Design / Analysis / Vibration / Noise - Drive Unit Structural Design & Cooling System Design / Reducer(Decelerator) Design / Thermal Analysis & Evaluation / Structural Design & Analysis	•			•		•		
	○ Inverter - DSP / Micom Application Technology Research - Power Electronic Circuit Design & Control / Inverter Drive System - Motor control Algorithm Development(Sensorless / Sensored Control) - Cooling System Design / Thermal - Power Module for EV Inverter (Design, Manufacturing, Reliability)	•			•		•		•
	○ Converter - Charger Algorithm Development using DSP / Microprocessor - PFC Control for Single-Phase / Three-Phase / AC-DC Converter - High Efficiency Converter Topology / Passive Element Design & Reaserch - Resonant Converter Design - Cooling System Design / Thermal	•			•		•		

* 약어 설명 - H&A : Home Appliance & Air Solution - HE : Home Entertainment - MC : Mobile Communications - VS : Vehicle Component Solutions - BS : Business Solutions

* 상기 사업본부/부문 외 본사 직속 융복합사업개발부문, 자율주행Task 등 신규 조직에서도 함께 검토 예정

모집 분야	세부 내용	사업본부/부문							
		H&A	HE	MC	VS	BS	CTO	로봇 사업 센터	소재/ 생산 기술원
Mechanics	<ul style="list-style-type: none"> ○ HVAC <ul style="list-style-type: none"> - IPMSM Control(Sensor-less Vector / Motor Control) / Single, Three Phase PFC Control - Digital Control / Automatic Control / PSIM or Matlab Simulation / Embedded System - Thermal Fluid Analysis / Fan Design / Performance Analysis - Computational Fluid Dynamics(CFD) / Computer Aided Engineering(CAE) - Heat Exchanger Design / Structural Design / Noise & Vibration / Sheet Metal Forming - Inverter System Algorithms / Logic Design / MotorCompressor Design / Smart Sensors - Waste Heat Recovery System / 2 Phase Flow / Heat Transfer / Cooling System 	•					•		•
	<ul style="list-style-type: none"> ○ Battery Pack / BMS(Battery Management System) <ul style="list-style-type: none"> - Battery Packs for Electrical Vehicles / System Design / Structural Stiffness Design - Safety Design / Cooling System Design / Battery Pack Electric Frame Design 	•			•			•	•
	<ul style="list-style-type: none"> ○ Mobile Structural Design / Exterior <ul style="list-style-type: none"> - Material / New Material / Surface Treatment / Die Casting 	•			•				•
	<ul style="list-style-type: none"> ○ Appliance R&D <ul style="list-style-type: none"> - Structure Design / Refrigerating Cycle & Thermal Fluid System / Dynamic Analysis / Noise & Vibration - Freshness & Hygiene / Thermoelectric Module / Insulation 	•					•	•	•
Signal Processing	<ul style="list-style-type: none"> ○ Communication & 5G/6G <ul style="list-style-type: none"> - OFDM, MIMO, Error Correcting Codes, Network Virtualization, Cross-link Optimization, Scheduling, Quantumn Computation, THz, mmWave, FDR, V2X 			•			•		
	<ul style="list-style-type: none"> ○ Media Processing <ul style="list-style-type: none"> - Video Codec, Point Cloud, Media Orchestration - Audio Codec, Sound Quality Enhancement 			•			•		
Chip & Circuit	<ul style="list-style-type: none"> ○ Chip <ul style="list-style-type: none"> - Mobile SoC Design / Computer Architecture / Mobile System / Mobile Chip / AI Chip / Mobile Verification - Device Modern Chip Protocol SW Development & HW Design / SoC Development / RF Design - Computer Vision Algorithm / Vehicle Semiconductor Design - Computer Architecture or Compiler / Mixed IP Design - Analog Circuit Design / Process Integration / TG / ISP Digital Design / CMOS Image Sensor Test - Automotive SoC Physical Design / Design Methodology Develop and Design Automation 				•		•		•
	<ul style="list-style-type: none"> ○ Wireless Technology <ul style="list-style-type: none"> - Wireless (RF / Antenna Design) Charging Technology - Wireless Charging Coil Design / EMF / EMC 			•	•				
Image Quality	<ul style="list-style-type: none"> ○ Display Device Image Quality Optimization & SW Algorithm Development <ul style="list-style-type: none"> - Image Processing / Measure and Evaluation / System SW Engineer 								
	<ul style="list-style-type: none"> ○ Monitor Signage <ul style="list-style-type: none"> - Image Processing & Computer Vision - Speech & Audio Processing - Virtual / Augmented Reality (VR / AR) - Mechanical Design / BLU Design / CAE 		•			•			
Production Engineering	<ul style="list-style-type: none"> ○ Advanced Technology <ul style="list-style-type: none"> - Semiconductor Process(Dry Etch) & Semiconductor Equipment - Applied Optics / Optic Design - AI / Intelligent Algorithm / Machine Learning / Deep Learning / Neural Network - High Power & High Precision Control Design / Design of Precision Mechanism - Atmospheric Pressure Spatial ALD / Large-Area PLD - High-Speed / Low Temp. Sintering of powder or Ink / Paste / microscale Device - Electronic Circuit Design / High Speed Digital Circuit Design / Large Scale Integration - Power Circuit Design / Power Circuit Control / High Power Packaging 				•				•
	<ul style="list-style-type: none"> ○ Automation Technology <ul style="list-style-type: none"> - Coating / Dispensing / Bonding / Laminating / Secondary Battery Technology - Printed Electronics Technology / Roll-to-Roll Transferring Technology - Vehicle Components (Motor / Stator / EV Battery) Equipment Technology - Robot Automation / Transferring (Stocker / AGV / Conveyor) / Logistics Consulting and Engineering 				•				•
	<ul style="list-style-type: none"> ○ Process Technology <ul style="list-style-type: none"> - Patterning Technology / Laser Application / Thermal Process Technology - Vacuum / Deposition / Plasma Application Technology 								•
	<ul style="list-style-type: none"> ○ Inspection & Control Systems <ul style="list-style-type: none"> - Machine Vision / Image processing / Pattern recognition / Image optics / 3D measurement - Electrical inspection / Sensor application / Inkjet printing - Wireless measurement / Digital signal inspection / Power control / Embedded system 				•				•
	<ul style="list-style-type: none"> ○ Production Base Technology <ul style="list-style-type: none"> - Structural / Impact Analysis & Optimization Design / Fluid / Thermal Analysis & Design - Noise & Vibration & Harshness Design Automation & Validation - Prognostic Health Management / Data Analytics - GPU/CPU Architecturing / Parreral Computing Design / AR / VR Programming - Production Environment / Particle Control & Airborne Particulate Monitoring - Welding / Casting / Diecasting / Metal Forming / Molding / Printing / Spray Coating - Glass Forming / Glass Strengthening / Ceramic & Ceramic Spray 								•
	<ul style="list-style-type: none"> ○ Production System Engineering <ul style="list-style-type: none"> - Production System(Manufacturing Process / Line / Factory) Design & Verification - Production & Operation Management / Optimization of Supply Chain Design - Product Architecture Planning & Optimization / Design Standardization - Product Development Process / Procurement Engineering - Quality Management / TRIZ / Statistical Modeling & Mining of Big Data - Equipment SW Architect / Development of Equipment Operation 								•
Material (Optics & Sensor)	<ul style="list-style-type: none"> ○ Materials <ul style="list-style-type: none"> - Optical Materials /Thermoelectric Materials & Devices / Heat Transfer Materials - High Strength & Strong Lightweight Metal / Phase change materials etc - Materials Characterization Analysis 								•
	<ul style="list-style-type: none"> ○ Intelligent Sensors <ul style="list-style-type: none"> - Materials for Sensors - CMOS / MEMS Integration Process / CMOS IC Design - HW or SW for Sensor Network - Power Management IC for Energy Harvesting - Sensor Integration UI / UX 								•

* 약어 설명 - H&A : Home Appliance & Air Solution - HE : Home Entertainment - MC : Mobile Communications - VS : Vehicle Component Solutions - BS : Business Solutions

* 상기 사업본부/부문 외 본사 직속 융복합사업개발부문, 자율주행Task 등 신규 조직에서도 함께 검토 예정

